

## Berkshiremuseum

### Gallery of Dinosaurs and Paleontology

#### *While You Are in the Gallery*

#### **Activities: Pre K - K**

##### Compare and Contrast

The dinosaur gallery's walls are painted with life size dinosaurs. After observing the walls, have students make statements comparing themselves to different dinosaurs, or comparing and contrasting two dinosaurs. For example, "The Apatosaurus is bigger than me, " or "The Velociraptor is smaller than the Triceratops."

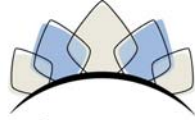
##### Dino Hunt!

Have students, working with partners, go on a scavenger hunt. A Dino Hunt is included at the end of this document. You can give each student a copy of the page and ask them to circle each item as they find it in the gallery, or you can give each pair of students one item to search for at a time: simply cut the page into strips, so that each item can be given out individually.

#### **Activities: Grades 1 - 2**

##### Excavate!

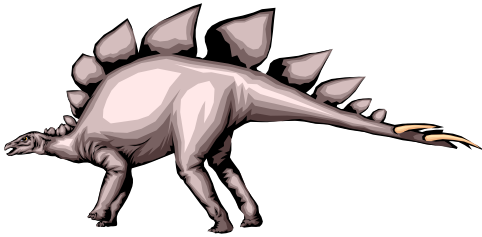
Visit the Dinosaur Dig, a simulated excavation site where students can uncover replicas of dinosaur skeletons. As students are digging, challenge them to think about what kind of bones they are finding. What part of the dinosaur's body have they found? Which kind of dinosaur might they have found: a long-neck, a meat-eater, a duck bill, a triceratops, etc.? Diagrams adjacent to each section of the Dig provide a key identifying the type of bones to be found and the dinosaur they represent.



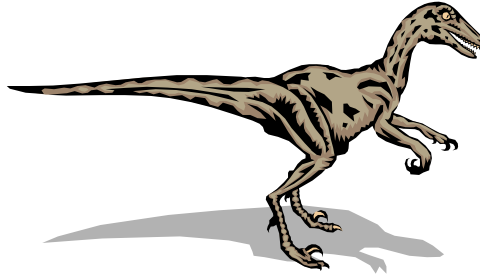
Berkshiremuseum

## Dino Hunt

*Gallery of Dinosaurs and Paleontology*



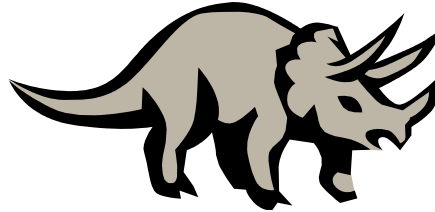
Stegosaurus



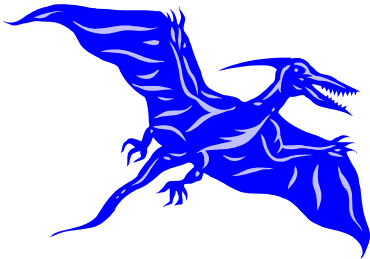
Velociraptor



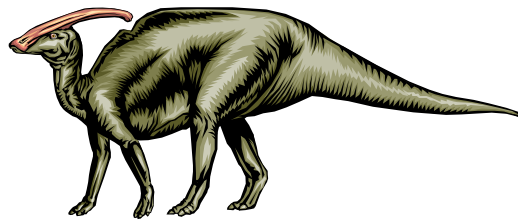
Dinosaur skull



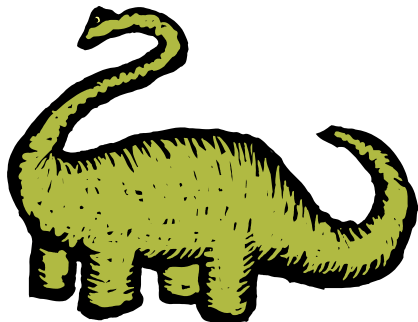
Triceratops



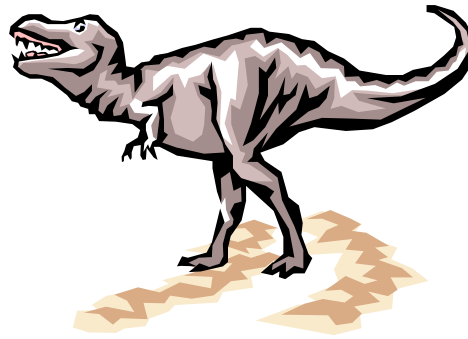
Flying reptile (look up!)



Parasaurolophus



Long-necked dinosaur  
Apatosaurus or Camarasaurus



Albertosaurus